

Using Moku:Lab via USB

A guide to connecting to Moku:Lab without Wi-Fi or Ethernet

There are some situations, for example for reasons of security or radio interference, you may need to use Moku:Lab with neither Wi-Fi nor ethernet. This application note explains how to use either iPad or PC with a Moku:Lab via wired, USB connection. No wireless or wired ethernet network is required.



Connecting to Moku:Lab via USB

In some situations, Wi-Fi and ethernet are not readily available, maybe due to security or other concerns. This application note provides instructions on how to connect to your Moku:Lab via USB cable to either an iPad or PC.

Connecting to iPad

Moku:Lab supports USB connections through the micro-USB data port on the rear panel.

What you'll need

To connect your Moku:Lab to an iPad via USB you will require the appropriate adaptor and a Micro-USB cable.

Depending upon your iPad you will need:

- **EITHER** Lightning to USB Camera Adapter
OR USB C to USB adaptor
- **AND** Micro-USB Cable

Lightning to USB Camera Adapter



Some iPads have a Lightning connector and will need a [Lightning to USB Camera Adapter](#) from Apple.

USB C to USB adaptor



Newer iPads have a USB-C connector and will need a [USB-C to USB adaptor](#). Apple and other retailers can supply this adaptor.

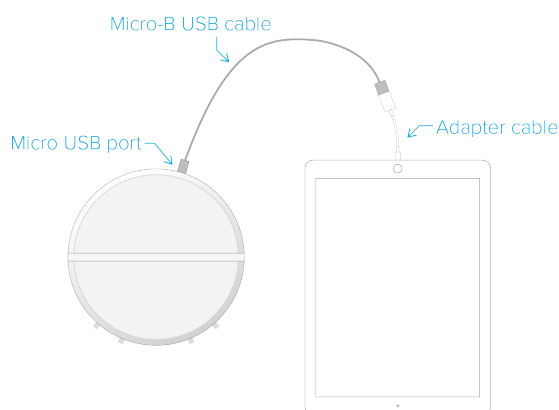
Micro-USB Cable

You will also require a USB type A to micro B cable. Micro-USB cables are commonly used to charge non-Apple mobile phones and are readily available.



Physical connection

1. Connect the appropriate adaptor to the iPad.
2. Connect the Type A USB end of the micro USB cable to the adaptor
3. Connect the micro-B USB end of the cable to the micro USB port located on the rear panel of the Moku:Lab.



Network connection

Once the iPad is connected to Moku:Lab via USB, the network connection appears as an USB/network connection to the iPad and can be selected in the “Settings” panel.

Launch the Moku:Lab app on the iPad. You should now see your Moku:Lab appear in the ‘Select your device’ menu.

Connecting to a PC

Moku:Lab supports USB connections through the micro-USB data port on the rear panel.

What you’ll need

To connect your Moku:Lab to a PC via USB you will require the following components.

Micro-USB Cable

Moku:Lab supports USB connections through the micro-USB data port on the rear panel. Micro-USB cables can be purchased online or from most local electronics retailers.



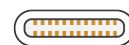
Most computers have come with at least one Type A USB port (the most common type of USB port) and will support a connection using a standard USB-to-Micro USB cable.



Type A



Micro-B



Type C

More recent computers often come with Type C USB ports instead of Type A. If this is the case, you will require an adapter to convert USB Type C to USB Type A. Alternatively, you can also use a USB Type C to Micro-B USB cable.

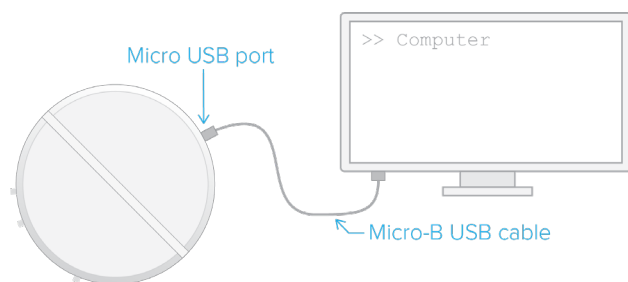
Moku:Lab

You will require access to a Moku:Lab.

Physical connection

When you have access to an appropriate micro USB cable, build the connection from the PC to the Moku:Lab by:

1. Connecting the USB cable to the PC and Moku:Lab.



Network connection

Once you've connected the PC to Moku:Lab, you will need to enable the appropriate network adaptor

MacOS : select the USB/LAN network adaptor in System Preferences -> Network

Windows : connect to USB Ethernet/RNDIS under Control Panel -> Network and Internet -> Network Connections.

Questions or comments?

Please contact us at support@liquidinstruments.com